

LOS ANGELES COUNTY SHERIFF'S DEPARTMENT



TRANSIT SERVICES BUREAU

Los Angeles County  
Metropolitan Transportation Authority  
**Transit Law Enforcement Services**

Community Policing Plan FY 2023  
(July 1, 2022—June 30, 2023)

***“One Team, Infinite Possibilities”***



**Metro**<sup>™</sup>



**MESSAGE FROM THE CAPTAIN**

Dear Transit Community,



It is my pleasure to present to you the Transit Services Bureau 2023 Community Policing Plan. This document details the wide variety of services Transit Services Bureau provides to Metro. Every member of our team focuses on community policing and it remains the core mission. As the only full-time staffed and dedicated Transit Policing agency in Los Angeles County, our bureau consists of over 325 professionals of the Los Angeles County Sheriff's Department, who have dedicated themselves to serving the riders and staff of the Los Angeles County Metro system.

Transit Services Bureau proudly provides public safety services to more than 101 cities throughout the Metro service area, including all buses and metro property outside of Los Angeles City and all rail outside of the cities of Los Angeles and Long Beach.

This considerable geography and unique transit environment is policed using dedicated transit policing field deputies and a variety of specialized teams to best enhance the ridership experience and provide the highest level of service to the riders and staff of the Metro system. The details of our dedicated teams are included in this plan. It is the collective vision of the leadership and staff of Transit Services Bureau to ensure a friendly and supportive public safety experience. I am exceptionally proud to be a part of the legacy of service to Metro since our first contract in 1994 and I am looking forward to many years of partnership ahead.

Respectfully,

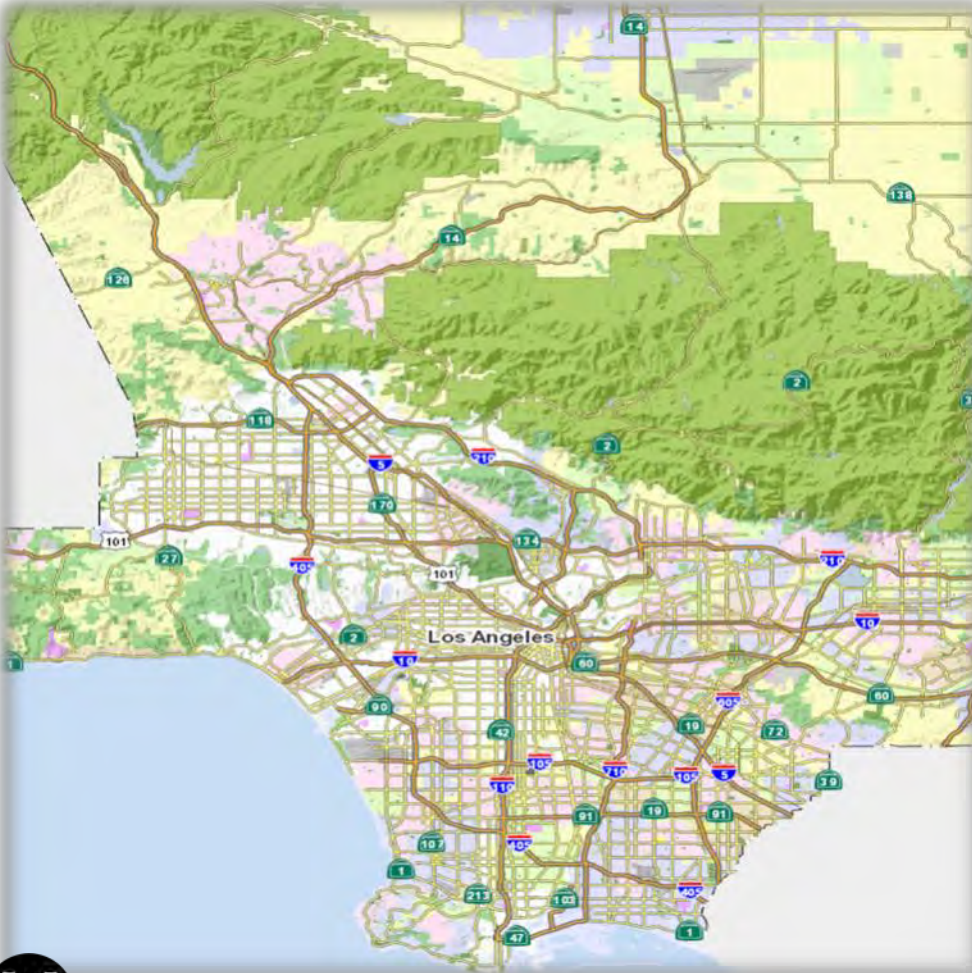
Shawn R. Kehoe, Captain  
Los Angeles County Sheriff's Department  
Transit Services Bureau



## THE LOS ANGELES COUNTY SHERIFF'S DEPARTMENT

The Los Angeles County Sheriff's Department (LASD) holds jurisdictional responsibilities over 4,084 square miles and is the law enforcement service provider to well over 10 million Los Angeles area residents. LASD provides general law enforcement and or security-related services to 42 contract cities, 140 unincorporated communities, 38 superior courts, ten community colleges, county parks, and the world's largest jail system. LASD has approximately 18,000 personnel and a sworn law enforcement cadre of nearly 10,000. LASD possesses an array of layered and diverse law enforcement, which supports LASD's capabilities in its existing contract with the Metropolitan Transportation Authority.

Due to the size and area, we cover, LASD is more than capable of taking on additional responsibilities for Metro as they continue to grow and expand their transit system throughout Los Angeles County and beyond.







## **LOS ANGELES COUNTY SHERIFF'S DEPARTMENT TRANSIT SERVICES BUREAU**

LASD Transit Services Bureau (TSB) is comprised of 313 sworn and professional staff members who are trained and dedicated to the transit mission. Our executive leadership team, supervisors, and deputies are dedicated to Metro and its patrons. TSB personnel takes ownership of their bus and rail lines, the safety of the patrons who use the system, and the safety of the employees who work for Metro.

Currently, TSB personnel deploys out of five locations: The Rail Operations Center, Downey Sub-Station, El Monte-Sub-Station, Sybil Brand, and Irwindale. TSB Deputy Personnel is strategically assigned to these areas geographically based on the rail lines and or bus lines they patrol. The deployment model TSB uses allows their deputy personnel to have lower response times, creates a greater law enforcement presence, thus preventing crime, and enables Metro patrons and employees to feel safe when they are working or riding the trains.





## TSB Bus & Rail Deputies Duties:

### Bus Deputies Duties:

- Conduct patrol checks of bus layovers, parking lots, and bus routes throughout their area of responsibility
- Conduct bus boarding's/operator contacts
- Ride buses
- Respond to calls for service on buses
- Assist citizens as needed
- Offer outreach programs to those in need
- Make arrests if needed
- Foster good relationships with patrons, Metro personnel and all Metro contract employees



### Rail Deputies Duties:

- Conduct patrol checks of platforms, parking lots and train routes throughout their area of responsibility
- Conduct train boarding's/operator contacts
- Ride trains
- Respond to calls for service
- Assist citizens as needed
- Offer outreach programs to those in need
- Foster good relationships with patrons, Metro personnel, and all Metro contract employees



### TSB Detective Personnel

TSB Detective Bureau is solely assigned to TSB, it consists of eight detectives, one court deputy, one crime analyst and one sergeant. They will be responsible for the following:

- Conduct investigations of reported criminal incidents that occur on buses, trains, layovers, platforms and parking lots
- Interview victims, witnesses and suspects
- Write and serve search warrants
- Complete filing packets for the District Attorney's Office
- Testify in court
- Conduct Surveillances
- Ensure evidence is gathered correctly
- Create wanted bulletins
- View Metro related surveillance video
- Provide comprehensive training briefings to TSB deputies on case law updates
- Collaborate with Metro personnel, and outside law enforcement agencies in respect to sharing of information regarding crime trends and apprehension of suspects
- Develop target specific deployment based on crimes occurring on the system for SAU Deputies in order to prevent crimes and arrest suspects







### **TSB Special Assignment Unit Team (SAU)**

The TSB Special Assignment Unit consists of 16 deputies and two sergeants. They will be responsible for the following:

- Members on the team possess unique skills that are useful for traditional and transit policing problems
  - Tactics specific to Metro Transit modes of transportation and facilities
  - Training focused on trains, buses, yards, buildings
  - Hazardous materials identification and handling
  - Improvised explosive device identification and safety protocols.
    - Pre and Post blast recognition and investigation
  - Force protection for specialized response from other units such as HAZMAT, Arson Explosive Detail, Search and Rescue Teams.
  - First aid, tactical medication, marksmanship, crisis negotiation
- Use community policing strategies to establish rapport with patrons on the system
- Offer flexibility in dealing with problem specific issues on the system
- Work various hours as needed for special events
- Identify specific problems on the line and deploy as directed
- Handle quality of life issues
- Searching for outstanding felony suspects
- Perform warrant training and serve search/arrest warrants for TSB Detectives
- Identify crime trends and strategically create solutions to maintain safety of riders
- Provides support to Patrol, Detective Bureau personnel and Transit Mental Evaluation Team (TMET)
- Aid in outreach efforts
- Aid in abatement of transient/homeless encampments
- Liaison to other patrol agencies that overlap into the transit system
- Continuously riding the system at various times to proactively identify problems and areas of concerns.





**Transit Services Bureau Mental Evaluation Team (TMET)**

TMET consists of ten deputies, three Department of Health Mental Health clinicians, and one sergeant. They are trained to provide specialized response to mentally ill individuals. They will be responsible for the following:

- Assigned to calls involving mental illness and homeless outreach
- Patrol Metro Stations, trains, buses and facilities seeking members of the community that can benefit from their services
- Obtain housing for homeless
- Assist mentally ill with getting medical and psychiatric care
- Provide coverage seven days/week for approximately 20 hours per day
- Oversee abatement efforts from Metro properties and areas adjacent to Metro properties
- Use Project Lifesaver Devices that track a variety of people with mental health issues and diminished mental capacities, including the elderly. (Families sign up the concerned parties and through the use of a wristband, they can then be tracked and located quickly)
- Train deputy personnel and law enforcement partners in real life simulated scenarios using the Multiple Interactive Learning Objectives (MILO)
- Hosts comprehensive mental health, outreach, and intervention training to all of Transit Services Bureau personnel







### Special Projects Team

TSB Special Projects team is comprised on one Lieutenant, and one Sergeant. They will be responsible for the following:

- Host Community Outreach and engagement events
- Identify concerns of the ridership through open and engaging dialog
- Expand the Reserve Program
- Create a Volunteer Program
- Engage and collaborate with local community leaders such as
  1. Faith Local Leaders
  2. Other Law Enforcement entities
  3. School Administrators
  4. Community Advocates
  5. Business leaders
- Innovate and create programs for the benefit of the ridership and surrounding communities.
- Collaborate with TSB deputy Personnel, and leadership to innovate, and create community outreach events.
- Focus community/ridership concerns while finding a solution to address them
- Provide educational “pop-up” booths at multiple locations to educated the ridership and surrounding communities.
- Build lasting partnership, and bridges with the community and ridership.





### Special Projects Team

#### **2021—2022 Special Projects Team, outreach events**

1. Coffee with TSB Capt. June 30<sup>th</sup>, Monrovia PAX
2. National night out, backpack giveaway August 3<sup>rd</sup>, Rosa Parks PAX
3. Coffee with a Deputy, Norwalk Layover Nov 16<sup>th</sup>
4. Stop Hate Rosa Park Station, Nov 17<sup>th</sup>
5. Coffee with a Deputy, Rosa Park Nov 30<sup>th</sup>
6. Coffee with a Deputy, El Monte Station, Dec 14<sup>th</sup>
7. Fentanyl Pop-up Booth South Pas Dec 16<sup>th</sup>
8. Polar Express, Gold Line Dec 17<sup>th</sup> Christmas toys given to
9. "Where is the Santa Deputy" 300 toys given to youth riders
10. TSB Reserve Deputies assisted in a Community Food Distribution, April 16<sup>th</sup>
11. Serenity Park clean UP, ROC Deputies Jan 17<sup>th</sup>
12. Coffee with Capt. And Chief of Azusa , Jan 19<sup>th</sup>
13. Fentanyl Popup booth, Sierra Madre Station, Jan 27<sup>th</sup>
14. Anti-Hate event Rosa Parks Pax. Feb 23<sup>th</sup>
15. Coffee with a Deputy Santa Monica, Feb 24<sup>th</sup>
16. Coffee with a LBPd. TSB Attended. Mar. 9<sup>th</sup>
17. Serenity Park Clean up in WATTs Mar 26<sup>th</sup>
18. Bangladeshi 51st Independence Day Parade. TSB Invited guest March 27<sup>th</sup>
19. Coffee with a Deputy, Rosa Park Nov 30<sup>th</sup>





### Commuter Enhancement Team (CET)

CET consists of 16 deputies and one sergeant. CET provides high visibility, with a focus on heavy commuter traffic timeframes. They will be responsible for the following:

- High visibility train rides on LASD jurisdictional train lines
- Interacting with the ridership while traveling with commuters
- Establish relationships, while being highly visible on the system.
- Creating an environment where the patrons feel safer while enjoying their time commuting
- Daily interaction between with Train Operators to ensuring their concerns are heard, and addressed.
- High visibility of all platforms while waiting for trains to arrive.
- Improving public confidence in the rail system while meeting and exceeding the needs of METRO.
- Seek knowledge from ridership to share with other TSB unit to enhance safety
- Assist in Public Awareness Campaigns.







### TSB K9 Deputies

The TSB K9 Team consists of ten K9 dogs, nine deputy handlers, and one sergeant handler. they will be responsible for the following:

- Deployed 7 days a week from 0500-2100 hours and are assigned to perform high visibility patrol/explosive detection sweeps
- Strategically positioned on the transit system to minimize call for service response times
- Respond quickly to any call for service and are able to clear unattended packages that do not pose a threat to the system. This enables trains/buses to have minimal interruptions to their schedules
- Conduct training scenarios each work day to maintain Transportation Security Administration training standards, and increase handler/K9 proficiency
- Train on a regular basis with LAPD Transit K9 and Sheriff Arson Explosives Detail (Bomb Squad) to stay current on trends in terrorism, explosive recognition/assessment, and credible threats
- Complete an annual proficiency evaluation administered by the National Explosive Detection canine team program



Continued on next page



### TSB K9 Deputies

- Extensive training, including a 10 week Transportation Security Administration Explosives Detection Canine Handler Course at Lackland Air Force Base in San Antonio, Texas, where they undergo hours of proficiency training in scenarios that mimic busy mass transit systems and airports
- Attended a K9 First Aid and Medic course, which enables them to provide initial medical care during critical incidents, including advanced procedures such as starting IVs (Intravenous therapy)
- Skills and abilities to identify and safely respond to chemical, biological, radiological, nuclear, or explosive (CBRNE) incidents
- Knowledge to effectively interdict and respond to an imminent suicide bombing attack (person or vehicle)





### **TSB Photo Enforcement Technicians (LETS)**

The TSB photo enforcement team consists of law enforcement technicians who provide oversight for Metro's Red Light Safety Program, which currently has 123 cameras. They will be responsible for the following:

- The program is an essential public safety program that is supported by the communities the Metro system travels through
- The red light safety program was designed to lower instances of collisions at rail and bus crossings and save lives
- Approximate 2019 revenue for Metro red light camera violations was over 6 million dollars (\$6,384,735.00)
- Over 81% of the red light cameras, fall outside LASD's contracted jurisdiction
- Conduct audits/inspections on all cameras as mandated by State Law (21455.5 CVC)
- Represent Metro as photo enforcement officers in court trials every week in Chatsworth, Van Nuys, Metro, Compton and Inglewood courts
- Conduct investigations for all red light camera incidents, which occur. In 2019, over 100,000 incidents (103,646) were viewed for citation approval and issuance
- Two of TSB LET's have over 10 years of experience in working as Photo Enforcement Officers and have an extensive working knowledge of the red light camera system, California State law, and are considered experts in the field.
- Assist law enforcement with possible suspect information for crimes occurring at or near monitored crossings
- Conduct photo viewing sessions for violators each week
- Training Metro's vendors on proper forms and necessary information needed for courts, audits, and other administrative requirements
- Attend weekly meetings with Metro and Redflex (vendor), prepare court packets for trials, complete trials by declaration, updates citations for issuance, coordinate the court trial schedule with the court clerks and return court packets with the proper dispositions

TSB Photo Enforcement LETs ensure there is accountability for citizens violating traffic safety laws where these cameras were strategically placed. In turn, making the streets adjacent to the transit system safer for Metro patrons





## LOS ANGELES COUNTY SHERIFF'S DEPARTMENT



### TSB Public Information Officer (PIO)

TSB has one Law Enforcement Technician (LET) assigned as its PIO. This LET has been at TSB for over 10 years and has fostered a good working relationship with Metro's PIO. The PIO will be responsible for the following:

- Communicate critical information effectively to the public
- Write press releases and prepare information for distribution by media outlets
- Draft press releases and arrange interviews for Department members
- Respond to request for information from media outlets
- Conduct media interviews
- Responsible for LASD TSBs Facebook, and Twitter account
- Works alongside Metro's PIO



The PIO is an integral part of LASD's and Metro's relationship. Together they ensure both parties are aware of any important newsworthy events.

### TSB TEAM LEADERS



TSB has two Bonus Deputies that are bus team leaders and four Bonus Deputies that are rail team leaders. They are responsible for the following:

- Supervise the rail lines and bus lines deputies'
- Liaison between line deputies and operations staff
- Attend monthly meetings with Metro Division supervisors
- Identify crime patterns
- Assist in bus bridge construction and rail construction
- Supervise and assist on train sweeps and offloading
- Keep bus boarding and rail boarding stats
- Assist Metro with collection of bus and rail system wide counts

The TSB Team leaders are a functional part of the day-to-day operation by liaising between patrol deputies, Metro division supervisors, and TSB operations staff.



## Los Angeles County Sheriff's Department Resources

LASD provides a full range of services at no additional costs:

- Special Enforcement Bureau
- Aero Bureau (aerial support units)
- Arson Explosives Detail (bomb-squad)
- Joint Regional Intelligence Center
- Emergency Operations Center
- Department of Operations Center
- Sheriff's Response Team
- Mounted Enforcement Detail (equestrian patrol units)
- Department Mental Evaluation Team
- Special Victims Bureau
- Homicide Bureau
- Operations Safe Street Bureau (gang investigators)
- Major Crimes Bureau
- Narcotics Bureau
- Fraud and Cyber Crimes Bureau
- Crime Analysis Program
- Contract Law Enforcement Bureau
- Forensic Crime Lab and Scientific Services Bureau
- Community Partnerships Bureau
- Taskforce for regional Auto Theft prevention
- Advocacy unit
- Internal Affairs Bureau
- Risk Management Bureau
- Internal Criminal Investigations Bureau
- Psychological Services Bureau
- Training Bureau
- Data systems Bureau
- Records and Identifications Bureau
- Communications and Fleet Management Bureau
- Human Trafficking Unit
- Reserve Services Detail





### **TSB's Metro Specific Mission**

- Create partnerships with our Metro bus and rail divisions by having our service area lieutenants and deputies attend division raps sessions
- Hold community events to foster good will with community members (i.e. coffee with the captain, and TSB open house events)
- Fostering partnerships with the transit community by attending community meetings within our policing area
- Utilize TSB Team Leaders as liaisons to Metro bus operators, rail operators and Metro security
- Maintaining excellence in transit crime prevention, response, criminal investigations, and quality of life concerns
- Enhancing public trust through accountability, authenticity, and ethical community policing principles
- Continue training our personnel utilizing the Multiple Interactive Learning Objectives (MILO) system, which focuses on real life scenarios in dealing with mentally ill individuals
- Assist Metro in training bus operators in dealing with mentally ill persons in an effort to reduce bus operator assaults
- Applying the law and Metro's code of conduct fairly, with constitutional authority, and respect for the dignity of all those we encounter
- Collaborate in joint training efforts with Metro operators, Metro Security, LAPD, and Long Beach PD in active shooter trainings, hostage situations, train derailments, and CBRNE incidents







### TSB's Goals & Objectives

- Reduction of crime
- Reduction in response times
- Increased perception of safety for the riding public, operators, and others using the Metro system
- Increased visibility
- Leveraging existing and emerging technology to aid in LASD's Mission and goals for Metro
- Ensuring excellence in customer service for Metro and those it serves
- Formation of a "One Team" training and collaboration philosophy that actively seeks out stakeholders and leverages joint interest (whether LAPD, LBPD, Metro Security, Contract Security, Union Station stakeholders such as Morlin Management, or others)
- Participate in joint training exercises to build relationships with our transit partners
- Fostering an effective partnership with Metro Security that promotes gains in visibility, safety, deployment, relationship, and training
- Ensuring law enforcement services are carried out with expediency
- Ensuring professionalism from all assigned personnel, in their service to Metro
- Provide specific training in problem oriented policing to assist Metro in addressing longstanding challenges related to crime, blight and disorder

